



SSA Series | Non-Spring Return 10 Nm

Fire and Smoke 3 Point On/Off



PRODUCT FEATURES

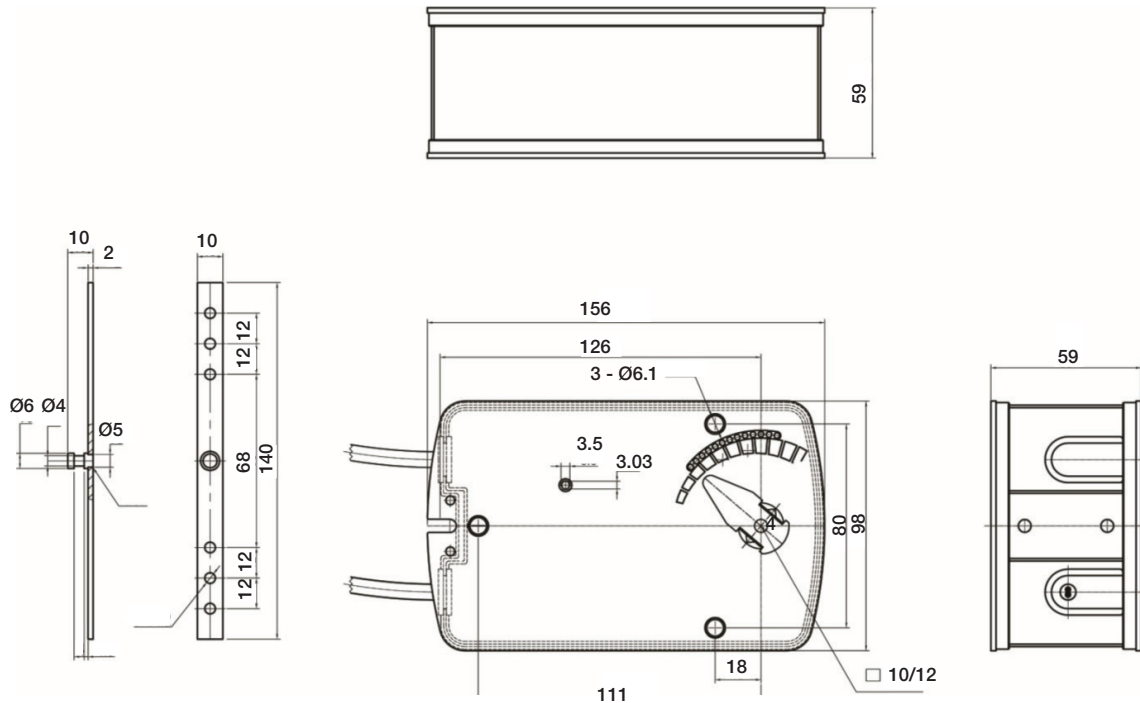
- 3 points on/off control
- Damper Size up to 2.0 m²
- Voltage AC/DC 24V and AC 230V available
- Shaft dimension Form Fit 12mm square
- Adapter supplied for Form Fit 8 or 10 mm square
- Manual Over ride by crank handle when required
- Anti-rotation bracket provided for stability
- Selectable direction of rotation by reversing actuator
- 2 SPDT Fixed auxiliary switches as Standard
- Actuators with 1m cable connection

MODEL SELECTION TABLE

Torque	Running Time	Power Supply	Auxiliary Switch	Model / Type	Aux switches
10 Nm	<30 sec	AC/DC 24V	2 x SPDT	10SSA - 24S2	Yes
10 Nm	<30 sec	AC 230V ±10%	2 x SPDT	10SSA - 230S2	Yes

SSA Series | Non-Spring Return 10 Nm

Fire and Smoke 3 Point On/Off



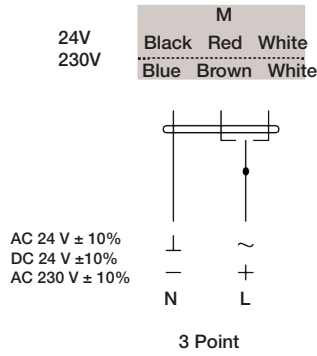
TECHNICAL SPECIFICATION

	10SSA...24S2	10SSA...230S2
Torque – Motor (Rated Voltage)		Min. 10 Nm
Damper Size		2.0 m ²
Power Supply	AC/DC 24 V	AC 230 V ±10%
Frequency		50...60Hz
Power Consumption		
-Operating	7.2 W	4.2 W
-At the end stops	2.5 W	2.5 W
For wire sizing		10.0 VA
Auxiliary Switches Rating (Amp and Voltage)	3 (1.5) A / 230 V (for 24 V and 230 V)	
Protection Class	II (for 24 V and 230 V)	
Controls Signal	3 Point On/Off	
Angle of Rotation	90° (95° mechanical)	
Weight	1.8Kg	1.9Kg
Life Cycle	60,000 rotation	
Sound Level	Below 45 dB (A)	
IP Protection	IP54	
Ambient Temperature	-20°...+50° as per IEC 721-3-3	
Inventory Temperature	+70° as per 721-3-2	
Ambient Humidity	5...95% rH non condensing	
Maintenance	Maintenance free	
Certification	CE and ISO 9000 EN / EEC... Requirements	

SSA Series | Non-Spring Return 10 Nm

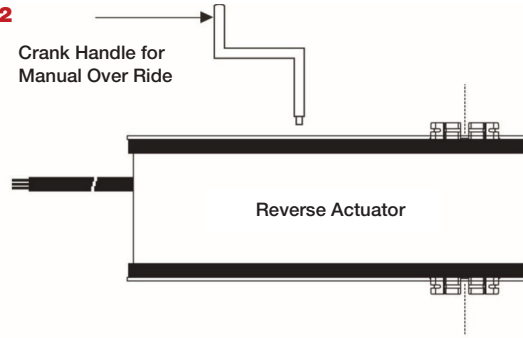
Fire and Smoke 3 Point On/Off

Wiring Diagram 10SSA...S2 Power Supply AC/DC 24 V - AC 230 V



⚠ Connect via safety isolating transformer

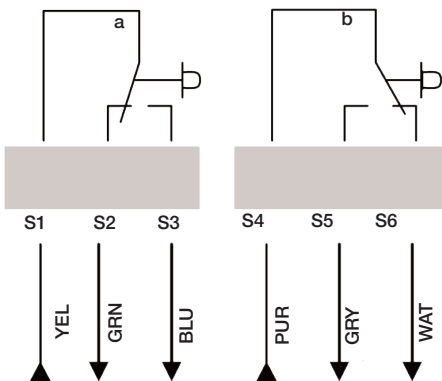
Changing Direction of Rotation 10SSA...S2



AC/DC 24V:
AC 230V:

Connect via safety isolating transformer.
To isolate from the main power supply, the system must incorporate a device which disconnects the phase conductors (with a least a 3 mm contact gap)

Auxiliary switches 10SSA...S2



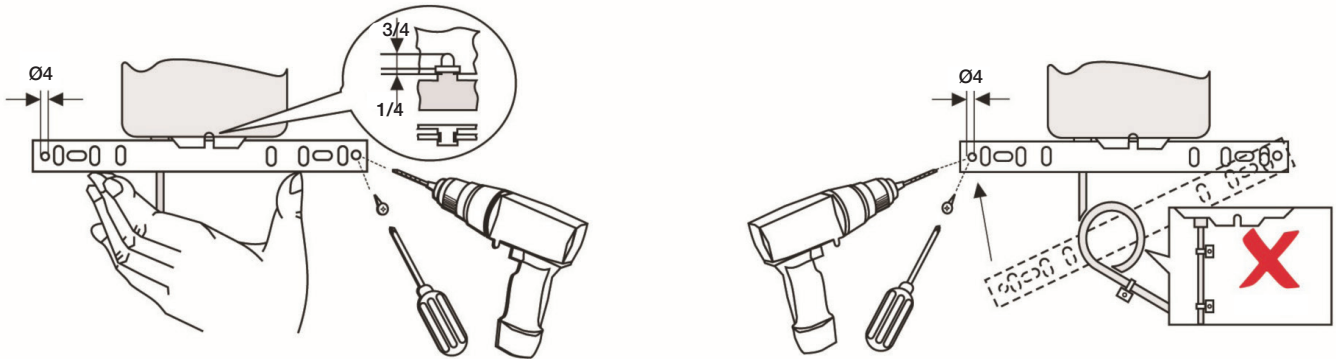
Auxiliary Switches 10SSA...S2

Auxiliary are fixed at 5° for switch (a) and 85° for switch (b) Auxiliary Switches are Non adjustable.

SSA Series | Non-Spring Return 10 Nm

Fire and Smoke 3 Point On/Off

Installation / Mounting Instruction



This actuator includes electrical and electronic components and may not be disposed as household garbage. Please consider the local valid legislation.



AC / DC 24 V: Connect via safety isolating transformer.

AC 230 V: To isolate from the main power supply, the system must incorporate a device which disconnects the phase conductor (with at least a 3 mm contact gap).