



## SFA Series | Spring Return 5 Nm

Fire and Smoke 2 Point on/off



### PRODUCT FEATURES

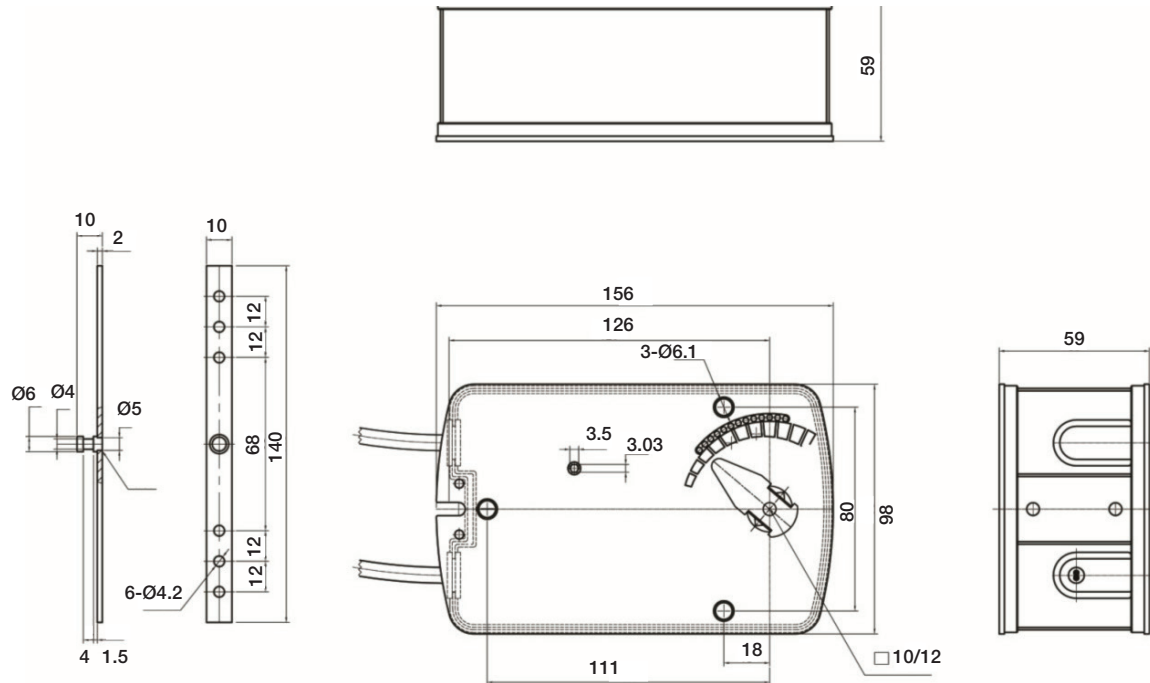
- 2 points on/off control
- Damper Size up to 1.0 m<sup>2</sup>
- Voltage AC/DC 24V and AC 230V available
- Shaft dimension Form Fit 12mm square
- Adapter supplied for Form Fit 8 or 10 mm square
- Manual Over ride by crank handle when required
- Anti-rotation bracket provided for stability
- Selectable direction of rotation by reversing actuator
- 2 SPDT Fixed auxiliary switches as Standard
- Energy saving at end stops
- Actuators with 1m cable connection
- Thermal Sensor when requested

### MODEL SELECTION TABLE

Torque	Running Time	Power Supply	Auxiliary Switch	Model / Type	Thermal Sensor
5 Nm	50...70 sec	AC/DC 24V	2 x SPDT	05SFA - 24S2	No
	Spring Back <20 sec			05SFA - 24S2T	Yes
5 Nm	50...70 sec	AC 230V $\pm 10\%$	2 x SPDT	05SFA - 230S2	No
	Spring Back <20 sec			05SFA - 230S2T	Yes

## SFA Series I Spring Return 5 Nm

Fire and Smoke 2 Point on/off

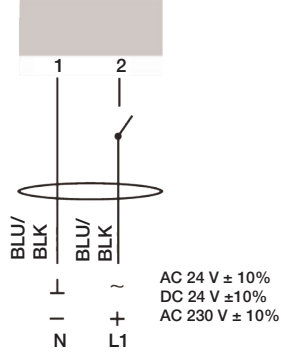


### TECHNICAL SPECIFICATION

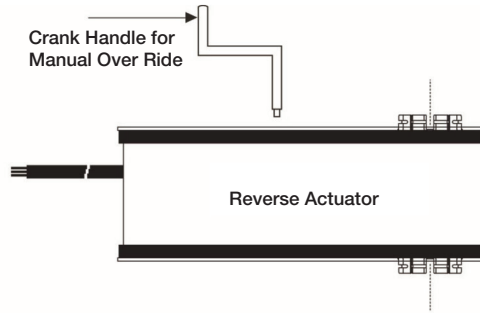
	05SFA.. 24S2(T)	05SFA ..230S2(T)
<b>Torque – Motor (Rated Voltage)</b>		Min. 5 Nm
<b>– Spring</b>		Min. 5 Nm
<b>Damper Size</b>		1.0 m <sup>2</sup>
<b>Power Supply</b>	AC/DC 24 V	AC 230 V ±10%
<b>Frequency</b>		50...60Hz
<b>Power Consumption</b>		
<b>-Operating</b>	7.0 W	4.2 W
<b>-At the end stops</b>	2.5 W	2.5 W
<b>For wire sizing</b>		10.0 VA
<b>Auxiliary Switches Rating (Amp and Voltage)</b>	3 (1.5) A / 230 V (for 24 V and 230 V)	
<b>Protection Class</b>	II (for 24 V and 230 V)	
<b>Controls Signal</b>	2 Point On/Off	
<b>Angle of Rotation</b>	90° (95° mechanical)	
<b>Thermal Temperature Trip</b>	>72° Celsius	
<b>Weight</b>	1.8 Kg	1.9 Kg
<b>Life Cycle</b>	60,000 rotation	
<b>Sound Level</b>	Below 45 dB (A)	
<b>IP Protection</b>	IP54	
<b>Ambient Temperature</b>	-20°...+50° as per IEC 721-3-3	
<b>Inventory Temperature</b>	-30°...+60°C / IEC 721-3-2	
<b>Ambient Humidity</b>	5...95% rH non condensing	
<b>Maintenance</b>	Maintenance free	
<b>Impact</b>	Typ I / EN 60730-1	
<b>Certification</b>	CE and ISO 9000 EN / EEC... Requirements	

**SFA Series | Spring Return 5 Nm**  
*Fire and Smoke 2 Point on/off*

**Wiring Diagram 05SFA...S2(T)**

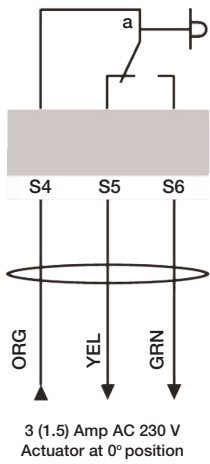


**Changing Direction of Rotation 05SFA...S2(T)**



⚠ AC/DC 24V: Connect via safety isolating transformer.  
 AC 230V: To isolate from the main power supply, the system must incorporate a device which disconnects the phase conductors (with a least a 3 mm contact gap)

**Auxiliary Switches 05SFA...S2(T)**



**Auxiliary Switches 05SFA...S2(T)**

Auxiliary are fixed at 5° for switch (a) and 85° for switch (b) Auxiliary Switches are Non adjustable.

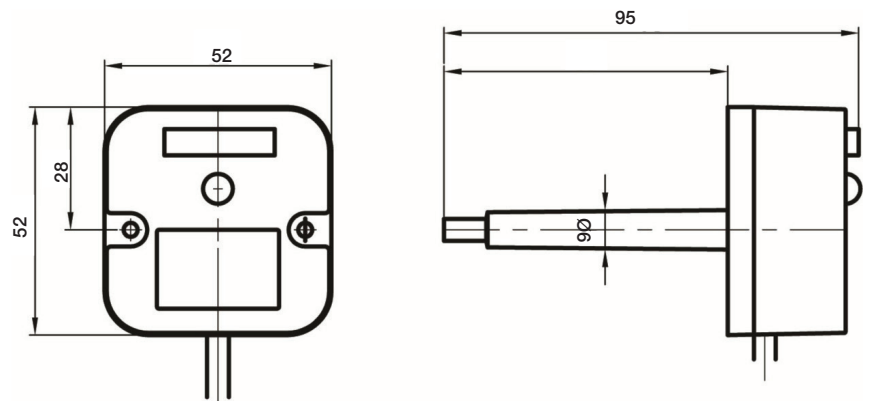
**Thermal Sensor NTS 72**

Thermal Sensor NTS 72 consist of both Ambient (TS1) and Duct sensor (TS2).

TS1 will trip open when the ambient temperature rise above 72°.

TS2 will trip open when the duct temperature rise above 72°.

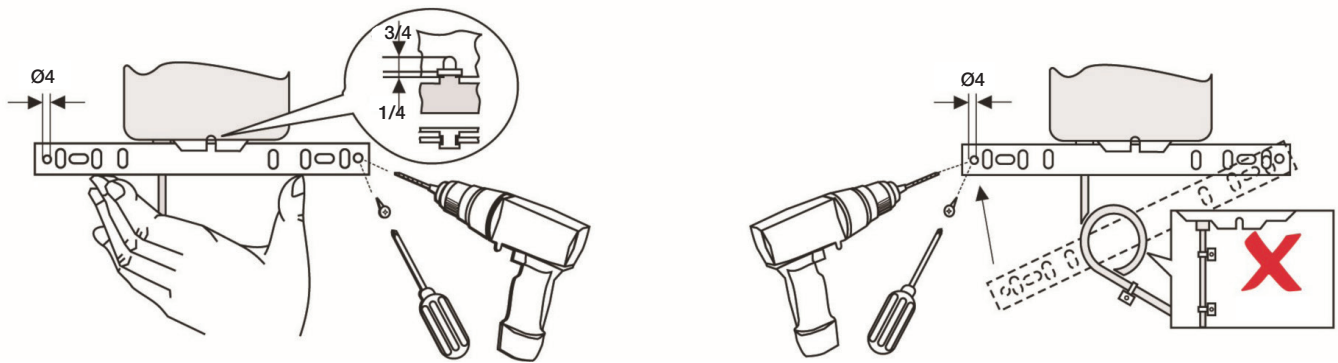
**Thermal Sensor NTS72**



## SFA Series | Spring Return 5 Nm

Fire and Smoke 2 Point on/off

### Installation / Mounting Instruction



This actuator includes electrical and electronic components and may not be disposed as household garbage. Please consider the local valid legislation.



AC / DC 24 V: Connect via safety isolating transformer.

AC 230 V: To isolate from the main power supply, the system must incorporate a device which disconnects the phase conductor (with at least a 3 mm contact gap).